

PRODUCT INFORMATION PACKET



Model No: 260
Catalog No: 260
50 WATT Refrigeration Motor, 1500 RPM, 230 Volts, Unit Bearing, TEAO
Unit Bearing Motors



Regal and Century are trademarks of Regal Beloit Corporation or one of its affiliated companies.
©2020 Regal Beloit Corporation, All Rights Reserved. MC017097E





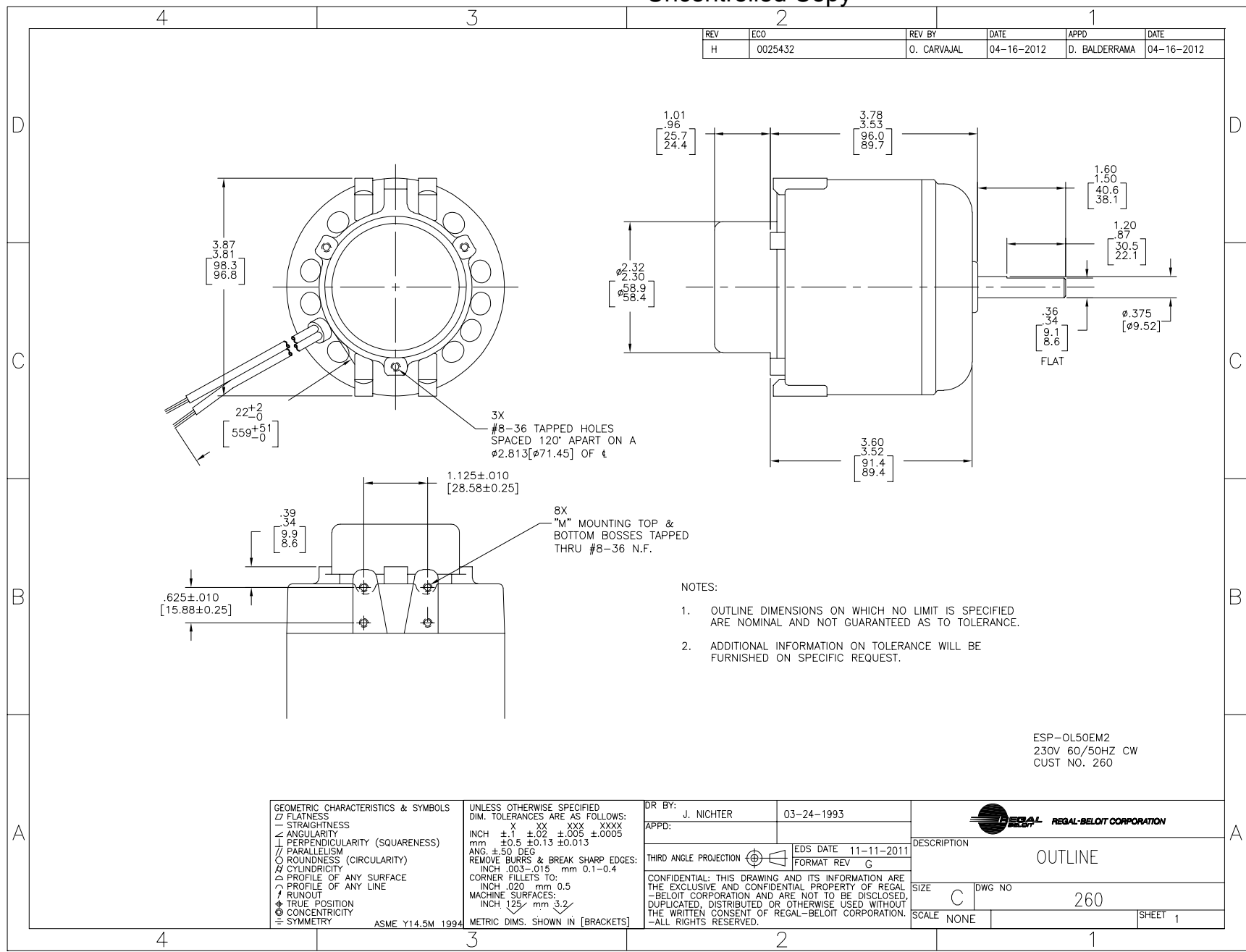
Nameplate Specifications

Output Watts	50 W	Frequency	60 Hz
Voltage	230 V	Current	0.85 A
Speed	1500 rpm	Service Factor	1
Phase	1	Duty	Continuous
Insulation Class	A	Frame	UNIT BEARING
Enclosure	Totally Enclosed Air Over	Thermal Protection	Thermally Protected
Ambient Temperature	40 °C	UL	Recognized
CSA	Y	CE	N

Technical Specifications

Electrical Type	Shaded Pole	Starting Method	Across The Line
Poles	4	Rotation	Clockwise Lead End
Mounting	2 BOSS/OSE 3 HOLES	Drive End Bearing	Unit
Opp Drive End Bearing	Unit	Frame Material	Cast Iron
Shaft Type	Flat	Frame Length	4.79 in
Shaft Diameter	0.375 in	Shaft Extension	1.6 in
Outline Drawing	260-S01		

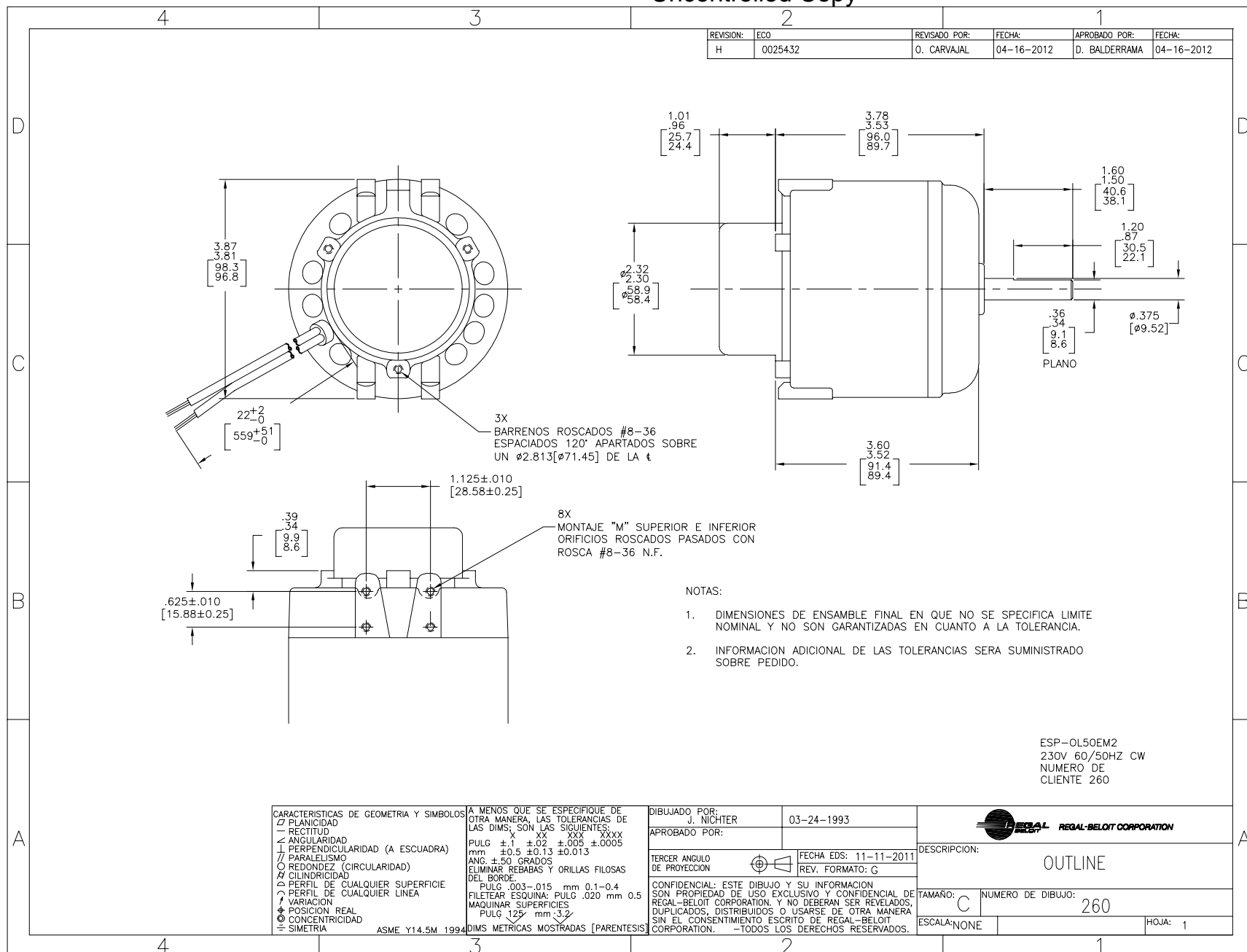
This is an uncontrolled document once printed or downloaded and is subject to change without notice. Date Created:22/06/2020



- NOTES:
1. OUTLINE DIMENSIONS ON WHICH NO LIMIT IS SPECIFIED ARE NOMINAL AND NOT GUARANTEED AS TO TOLERANCE.
 2. ADDITIONAL INFORMATION ON TOLERANCE WILL BE FURNISHED ON SPECIFIC REQUEST.

ESP-OL50EM2
230V 60/50HZ CW
CUST NO. 260

GEOMETRIC CHARACTERISTICS & SYMBOLS ▭ FLATNESS — STRAIGHTNESS ∠ ANGULARITY ⊥ PERPENDICULARITY (SQUARENESS) ∥ PARALLELISM ○ ROUNDNESS (CIRCULARITY) ⌀ CYLINDRICITY ▽ PROFILE OF ANY SURFACE ~ PROFILE OF ANY LINE † RUNOUT Ⓧ TRUE POSITION ⊙ CONCENTRICITY = SYMMETRY ASME Y14.5M 1994	UNLESS OTHERWISE SPECIFIED DIM. TOLERANCES ARE AS FOLLOWS: INCH X XX XXX XXXX ±.1 ±.02 ±.005 ±.0005 mm ±0.5 ±0.13 ±0.013 ANG. ±.50 DEG REMOVE BURRS & BREAK SHARP EDGES: INCH .003-.015 mm 0.1-.04 CORNER FILLETS TO: INCH .020 mm 0.5 MACHINE SURFACES: INCH 125 mm 3.2 METRIC DIMS. SHOWN IN [BRACKETS]	DR BY: J. NICHTER	03-24-1993	REGAL BELOIT CORPORATION DESCRIPTION: OUTLINE SIZE: C DWG NO: 260 SCALE: NONE SHEET: 1
		APPD:	EDS DATE 11-11-2011 FORMAT REV C	



- NOTAS:
1. DIMENSIONES DE ENSAMBLE FINAL EN QUE NO SE ESPECIFICA LIMITE NOMINAL Y NO SON GARANTIZADAS EN CUANTO A LA TOLERANCIA.
 2. INFORMACION ADICIONAL DE LAS TOLERANCIAS SERA SUMINISTRADO SOBRE PEDIDO.

ESP-OL50EM2
230V 60/50HZ CW
NUMERO DE
CLIENTE 260

CARACTERISTICAS DE GEOMETRIA Y SIMBOLOS ▽ PLANICIDAD — RECTITUD ∠ ANGULARIDAD ⊥ PERPENDICULARIDAD (A ESQUADRA) // PARALELISMO ○ REDONDEZ (CIRCULARIDAD) ⌀ CILINDRICIDAD ⊖ PERFIL DE CUALQUIER SUPERFICIE ⊖ PERFIL DE CUALQUIER LINEA † VARIACION ● POSICION REAL ⊕ CONCENRICIDAD ≡ SIMETRIA	A MENOS QUE SE ESPECIFIQUE DE OTRA MANERA, LAS TOLERANCIAS DE LAS DIMS: SON LAS SIGUIENTES: PULG X XX XXX XXXX PULG ±.1 ±.02 ±.005 ±.0005 mm ±0.5 ±0.13 ±0.13 ANG ±50 GRADOS ±0.013 ELIMINAR REBABAS Y ORILLAS FILOSAS DEL BORDE. PULG .003-.015 mm 0.1-0.4 FILETEAR ESQUINA: PULG .020 mm 0.5 MAQUINAR SUPERFICIES PULG 125 mm 3.2	DIBUJADO POR: J. NICHTER 03-24-1993	REGAL-BELOIT CORPORATION DESCRIPCION: OUTLINE TAMANO: C NUMERO DE DIBUJO: 260 ESCALA: NONE HOJA: 1
	TERCER ANGULO DE PROYECCION	FECHA EDS: 11-11-2011 REV. FORMATO: G	
	CONFIDENCIAL: ESTE DIBUJO Y SU INFORMACION SON PROPIEDAD DE USO EXCLUSIVO Y CONFIDENCIAL DE REGAL-BELOIT CORPORATION. Y NO DEBERAN SER REVELADOS, DUPLICADOS, DISTRIBUIDOS O USARSE DE OTRA MANERA SIN EL CONSENTIMIENTO ESCRITO DE REGAL-BELOIT CORPORATION. -TODOS LOS DERECHOS RESERVADOS.		
	ASME Y14.5M 1994 DIMS METRICAS MOSTRADAS [PARENTESIS]		

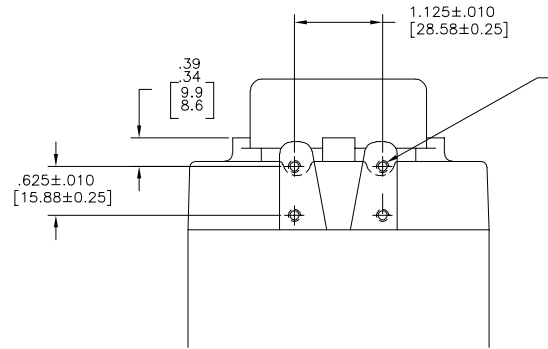
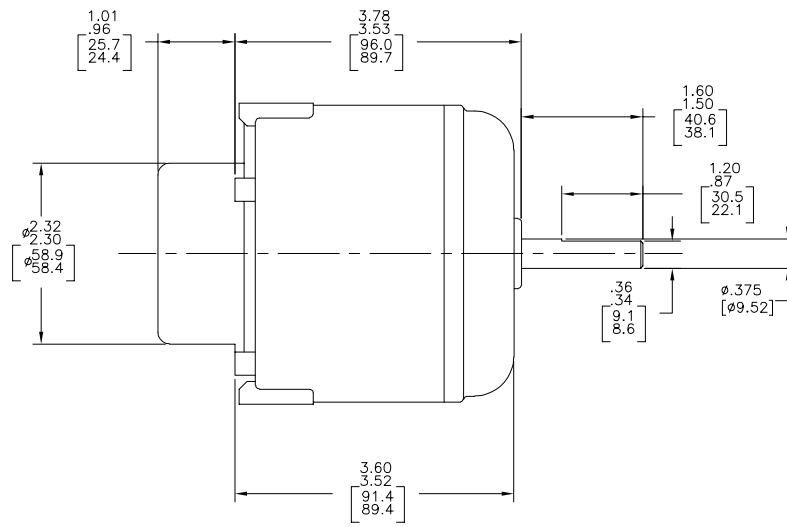
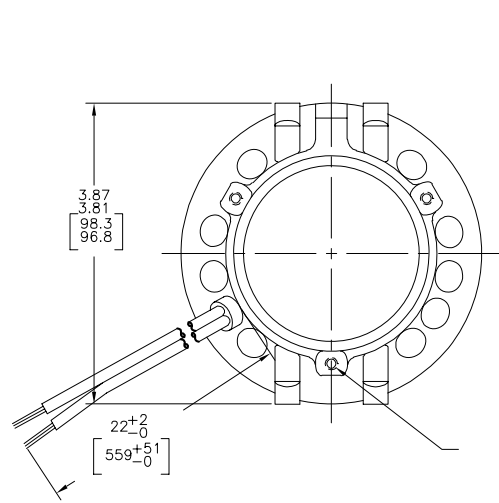
4

3

2

1

版本	ECO	编制	日期	批准	日期
H	0025432	O. CARVAJAL	04-16-2012	D. BALDERRAMA	04-16-2012



形位公差	除另有注明
□ 平面度	尺寸公差如下:
— 直线度	英寸 X XX XXX XXXX
∠ 倾斜度	毫米 ±.1 ±.02 ±.005 ±.0005
⊥ 垂直度	英寸 ±0.5 ±0.13 ±0.013
∥ 平行度	角度 ±.50 度
○ 圆度	清理毛刺和尖棱
⊙ 圆跳动	英寸 .003-.015 毫米 0.1-0.4
⊙ 面轮廓度	内圆角
⊙ 线轮廓度	英寸 .020 毫米 0.5
⊙ 圆跳动	表面粗糙度
⊙ 位置度	英制 125 米制 3.2
⊙ 对称度	米制尺寸显示在 []

ASME Y14.5M 1994

绘图:	J. NICHTER	03-24-1993
批准:		
第三角投影	⊙	图纸格式发布日期 11-11-2011 图纸格式版本 C
机密: 本图纸及相关信息所有权归REGAL-BELOIT CORPORATION. 未经REGAL-BELOIT CORPORATION书面授权, 不得泄露、复制、传播或作其他用途。--版权所有		



名称	OUTLINE	
图幅	C	图号 260
比例	NONE	页号 1

4

3

2

1